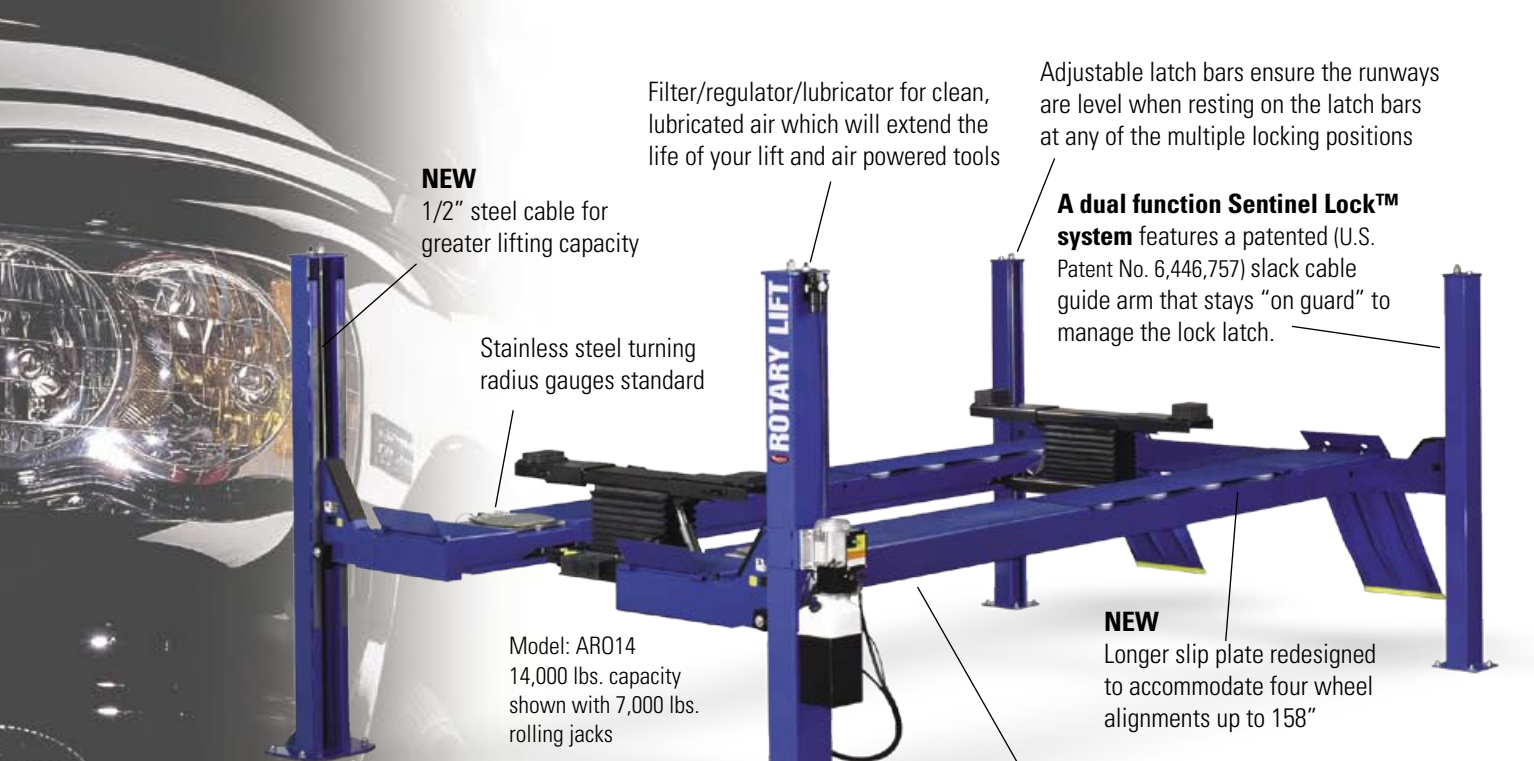


Ability To Do More



NEW
1/2" steel cable for greater lifting capacity

Filter/regulator/lubricator for clean, lubricated air which will extend the life of your lift and air powered tools

Adjustable latch bars ensure the runways are level when resting on the latch bars at any of the multiple locking positions

A dual function Sentinel Lock™ system features a patented (U.S. Patent No. 6,446,757) slack cable guide arm that stays "on guard" to manage the lock latch.

Stainless steel turning radius gauges standard

Model: AR014
14,000 lbs. capacity shown with 7,000 lbs. rolling jacks

NEW
Longer slip plate redesigned to accommodate four wheel alignments up to 158"

MADE IN THE USA

NEW
Redesigned runways to handle higher capacity vehicles and longer wheelbases up to 212 1/2"

NEW
14K
capacity

Feature	SM14	SMD14	AR14	AR014
14,000 lbs. capacity	•	•	•	•
Filter/regulator/lubricator	•	•	•	•
Open-end design		•		•
1/2" diameter steel cable	•	•	•	•
Cylinder located under the runway	•	•	•	•
Dual function Sentinel Lock™ System	•	•	•	•
Accommodates up to 212 1/2" wheelbase		•	•	•
Stainless steel radius gauges standard			•	•
Two rolling jacks standard			•	•
Compatible with the new technology alignment systems on the market today			•	•
Optional bolt-on alignment kit available*	•	•		

* Bolt-on alignment equipment is compatible with the new technology alignment equipment on the market today



14,000 lbs. Capacity Four-Post Lifts

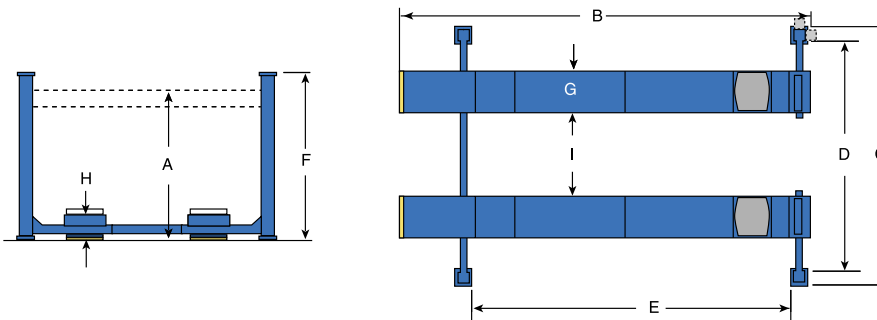
www.rotarylif.com

Specifications

General Service

Alignment

Model:	SM14	SM014	AR14	AR014
Max. Wheelbase*	S	158 1/2" (4026mm)	158 1/2" (4026mm)	158 1/2" (4026mm)
	L	182 1/2" (4636mm)	192 1/2" (4890mm)	192 1/2" (4890mm)
	EL2	206 1/2" (5245mm)	212 1/2" (5397mm)	212 1/2" (5397mm)
Max. Two Wheel Align*	S		153" (3886mm)	153" (3886mm)
	L	N/A	188" (4775mm)	188" (4775mm)
	EL2		208" (5283mm)	208" (5283mm)
Max. Four Wheel Align*	S		142" (3607mm)	142" (3607mm)
	L	N/A	158" (4013mm)	158" (4013mm)
	EL2		158" (4013mm)	158" (4013mm)
A. Rise		73 3/4" (1873mm)	73 3/4" (1873mm)	73 3/4" (1873mm)
B. Length Overall†	S	18' 9" (5715mm)	19' 2" (5842mm)	18' 9" (5715mm)
	L	20' 9" (6325mm)	22' (6706mm)	21' 7" (6579mm)
	EL2	22' 9" (6934mm)	23' 8" (7214mm)	23' 3" (7087mm)
C. Width Overall**†		11' 1" (3378mm)	11' 7" (3531mm)	11' 1" (3378mm)
D. Inside of Columns**		117 1/2" (2985mm)	117 1/2" (2985mm)	117 1/2" (2985mm)
E. Between Front and Rear Columns	S	171 7/8" (4366mm)	171" (4343mm)	171 7/8" (4366mm)
	L	195 7/8" (4975mm)	205" (5207mm)	205 7/8" (5229mm)
	EL2	219 7/8" (5585mm)	225" (5715mm)	225 7/8" (5737mm)
F. Height of Columns		6' 10 1/8" (2086mm)	7' 11 3/16" (2418mm)	6' 10 1/8" (2086mm)
G. Width of Runways		20" (508mm)	20" (508mm)	20" (508mm)
H. Height of Runways		7" (178mm)	7" (178mm)	7" (178mm)
I. Width Between Runways		43" (1092mm)	43" (1092mm)	43" (1092mm)
Lifting Capacity		14,000 lbs. (6350kg)	14,000 lbs. (6350kg)	14,000 lbs. (6350kg)
Motor		2 HP	2 HP	2 HP
Voltage Single Phase		208v-230v	208v-230v	208v-230v
Time of Full Rise		55 seconds	65 seconds	65 seconds
Min. Bay Size	S	15' x 23' (4572 x 7010mm)	15' x 23' (4572 x 7010mm)	15' x 23' (4572 x 7010mm)
	L	15' x 25' (4572 x 7620mm)	15' x 26' (4572 x 7925mm)	15' x 26' (4572 x 7925mm)
	EL2	15' x 27' (4572 x 8230mm)	15' x 28' (4572 x 8534mm)	15' x 28' (4572 x 8534mm)



* Maximum wheelbase is based on a tire diameter of 29 1/2" (749mm).

** Narrow bay models available. Consult factory for min. bay size before ordering.

† Length overall is 8" longer with power unit mounted on the front of the column. Width is 8" wider with power unit mounted on the side of the column.



Standard lift colors

Rotary World HQ

2700 Lanier Drive
Madison, IN 47250, USA
www.rotarylif.com

North America Contact Information

Sales: p 800.640.5438
f 800.578.5438
e userlink@rotarylif.com
Tech. Support: p 800.445.5438
f 800.822.6502
e userlink@rotarylif.com

World Wide Contact Information

World HQ/USA: 1.812.273.1622
Canada: 1.905.812.9920
European HQ/Germany: +49.771.9233.0
United Kingdom: +44.178.747.7711

Australasia: +60.3.7660.0285
Southern Africa: 1.812.273.1622
Latin America/Caribbean: 1.812.273.1622
Middle East/Northern Africa: +49.771.9233.0



Lit# 14K_2007.01
©2007 Rotary®, Printed in U.S.A., All Rights Reserved. Unless otherwise indicated, ROTARY, DOVER and all other trademarks are property of Dover Corporation and its affiliates.

ROTARY LIFT
The World's Most Trusted Lift™

